



# Secure It

Modular Locker System

THE VE DIFFERENCE

# Life Long Learning.

At VE Furniture, we are more than just a furniture company; we are pioneers in creating environments that inspire learning and growth. With a rich history rooted in the heart of Australia's educational landscape, our mission transcends the mere provision of furniture. We are dedicated to fostering the creation of spaces that encourage innovation, collaboration and curiosity for the minds of tomorrow.





OUR PHILOSOPHY

# Crafting Futures.

Our philosophy is simple: to design solutions that not only meet the immediate needs of educational spaces but also anticipate the demands of the future. We believe that every piece of furniture should contribute to an atmosphere of discovery and excellence, reflecting the evolving nature of education itself. This belief drives our commitment to sustainability, quality, and adaptability in every product we create.

COMPREHENSIVE SERVICES

# Tailored for Education.

At VE Furniture, we are more than suppliers; we are partners in the journey of education. Our "Secure It" locker range is a testament to our commitment to providing secure, sustainable, and adaptable storage solutions.

## SPACE PLANNING AND DESIGN

Understanding that every educational institution has its unique character and challenges, our team of experts specialises in bespoke space planning and design. We work closely with you to transform your vision into reality, creating environments that are not only functional but also conducive to learning and personal growth

## FAST, BESPOKE MANUFACTURING

With state-of-the-art facilities and a commitment to innovation, VE Furniture prides itself on its ability to quickly turn concepts into high-quality tangible solutions. Our efficient manufacturing processes ensure that your needs are met with speed and precision, without compromising on quality.

## SUPPORT & REFURBISHMENT

We stand by the durability and longevity of our products. However, we also understand the need for ongoing support and refurbishment. Our comprehensive product replacement, refurbishment and maintenance services ensure that your educational spaces remain vibrant, functional and up-to-date, adapting to the ever-changing educational landscape.

# Full Height Lockers

## Secure It Full Height Lockers: Expanding Possibilities in Shared Storage.

The Secure It Full Height Lockers are the pinnacle of collective storage solutions, ingeniously designed to cater to the evolving demands of educational environments. These models stand out for their exceptional capacity and space efficient design, promoting both individual privacy and communal interaction.

### KEY FEATURES:

- One to three doors per bay
- Fully welded steel frame
- Optional hidden adjustable feet\*
- Fixed height shelf\*
- Coat hook\*

### OPTIONAL EXTRAS:

- Door perforations
- Power + Charging
- Sloping tops
- Numbering
- End panels
- Shrouds
- Locks

### STANDARD INCLUSIONS

All colours, materials and accessories can be customised and upgraded.

### BODY:

EO white or storm medium-density fibreboard with matching ABS edge with 40mm high plinth

### DOORS:

EO laminate with matching ABS edge

### ACCESSORIES:

Striker plate lock and routed finger pull handle



### FD2 LOCKER

Code: SEC004



### FD4 LOCKER

Code SEC005



### FD6 LOCKER

Code SEC006

Code	Description	H	W	D	Door Height	Plinth Height	Individual Users
SEC004	Secure It FD2 Locker	1795	725	580	1740	40 or 100	2
SEC005	Secure It FD4 Locker	1795	725	580	855	40 or 100	4
SEC006	Secure It FD6 Locker	1795	725	580	560	40 or 100	6



### FS1 LOCKER

Code: SEC001



### FS2 LOCKER

Code SEC002



### FS3 LOCKER

Code SEC003

Code	Description	H	W	D	Door Height	Plinth Height	Individual Users
SEC001	Secure It FS1 Locker	1795	375	580	1740	40 or 100	1
SEC002	Secure It FS2 Locker	1795	375	580	855	40 or 100	2
SEC003	Secure It FS3 Locker	1795	375	580	560	40 or 100	3

\* Adjustable feet only available on SEC004, SEC005, SEC006, SEC007, SEC008 and SEC009

\* Coat hooks included in models SEC001, SEC002, SEC004, SEC005, SEC007 and SEC008

\* Fixed height shelf included in models SEC001, SEC002, SEC004, SEC005, SEC007 and SEC008



### FT3 LOCKER

Code: SEC007



### FT6 LOCKER

Code SEC008



### FT9 LOCKER

Code SEC009

Code	Description	H	W	D	Door Height	Plinth Height	Individual Users
SEC007	Secure It FT3 Locker	1795	1075	580	1740	40 or 100	3
SEC008	Secure It FT6 Locker	1795	1075	580	855	40 or 100	6
SEC009	Secure It FT9 Locker	1795	1075	580	560	40 or 100	9

All dimensions and specifications are in millimetres (mm)

# Three-quarter Height Lockers

## Secure It Three-quarter Height Lockers: Maximising Flexibility in Shared Spaces.

The Secure It Three-Quarter Height Lockers redefine shared storage in educational settings, striking the perfect balance between ample storage and space conservation. Their intelligent design ensures individual security while fostering an environment conducive to interaction.

### KEY FEATURES:

- One to two doors per bay
- Fully welded steel frame
- Optional hidden adjustable feet\*
- Fixed height shelf\*
- Coat hook\*

### OPTIONAL EXTRAS:

- Door perforations
- Power + Charging
- Sloping tops
- Numbering
- End panels
- Shrouds
- Locks

### STANDARD INCLUSIONS

All colours, materials and accessories can be customised and upgraded.

### BODY:

EO white or storm medium-density fibreboard with matching ABS edge with 40mm high plinth

### DOORS:

EO laminate with matching ABS edge

### ACCESSORIES:

Striker plate lock and routed finger pull handle



**QS1 LOCKER**  
Code: SEC010



**QS2 LOCKER**  
Code SEC011



**QD2 LOCKER**  
Code SEC012

Code	Description	H	W	D	Door Height	Plinth Height	Individual Users
SEC010	Secure It QS1 Locker	1205	375	580	1150	40 or 100	1
SEC011	Secure It QS2 Locker	1205	375	580	560	40 or 100	2
SEC012	Secure It QD2 Locker	1205	725	580	1150	40 or 100	2



\* Adjustable feet only available on SEC012, SEC013, SEC014, SEC007 and SEC015

\* Fixed height shelf included in models SEC010, SEC012 and SEC014



**QD4 LOCKER**  
Code: SEC013



**QT3 LOCKER**  
Code SEC014



**QT6 LOCKER**  
Code SEC015

Code	Description	H	W	D	Door Height	Plinth Height	Individual Users
SEC013	Secure It QD4 Locker	1205	725	580	560	40 or 100	4
SEC014	Secure It QT3 Locker	1205	1075	580	1150	40 or 100	3
SEC015	Secure It QT6 Locker	1205	1075	580	560	40 or 100	6

All dimensions and specifications are in millimetres (mm)



## Half Height Lockers

Secure It Half Height Lockers:  
Optimising Space with Compact Solutions.

Secure It Half Height Lockers offer a compact and versatile storage option for schools looking to maximise their available space without sacrificing functionality. These lockers are designed to fit seamlessly into smaller areas, providing secure storage while encouraging a more open, accessible environment for students and staff alike.

### KEY FEATURES:

- One door per bay
- Fully welded steel frame
- Optional hidden adjustable feet\*
- Fixed height shelf

### OPTIONAL EXTRAS:

- Door perforations
- Sloping tops
- Numbering
- End panels
- Shrouds
- Locks

### STANDARD INCLUSIONS

All colours, materials and accessories can be customised and upgraded.

### BODY:

EO white or storm medium-density fibreboard with matching ABS edge with 40mm high plinth

### DOORS:

EO laminate with matching ABS edge

### ACCESSORIES:

Striker plate lock and routed finger pull handle



**HS1 LOCKER**  
Code: SEC016



**HD2 LOCKER**  
Code SEC017



**HT3 LOCKER**  
Code SEC018

Code	Description	H	W	D	Door Height	Plinth Height	Individual Users
SEC016	Secure It HS1 Locker	910	375	580	855	40 or 100	1
SEC017	Secure It HD2 Locker	910	725	580	855	40 or 100	2
SEC018	Secure It HT3 Locker	910	1075	580	855	40 or 100	3

All dimensions and specifications are in millimetres (mm)

\* Adjustable feet only available on SEC017, SEC018 and SEC019

# Mobile Lockers

## Secure It Mobile Lockers: Dynamic Storage for Learning Environments.

The Secure It Mobile Lockers bring unparalleled versatility to educational storage, designed for the dynamic needs of contemporary classrooms and learning spaces. With their mobility, these lockers facilitate easy reconfiguration of spaces, supporting collaborative learning while ensuring personal belongings are safely stored.

### KEY FEATURES:

- Two doors per bay
- Fully welded steel frame
- 100mm Mobile Castors

### OPTIONAL EXTRAS:

- Door perforations
- Numbering
- End panels
- Shrouds
- Locks

### STANDARD INCLUSIONS

All colours, materials and accessories can be customised and upgraded.

### BODY:

EO white or storm medium-density fibreboard with matching ABS edge

### DOORS:

EO laminate with matching ABS edge

### ACCESSORIES:

Striker plate lock, routed finger pull handle and mobile castors.



### MD4 LOCKER

Code: SEC020

### MQ8 LOCKER

Code SEC021

Code	Description	H	W	D	Door Height	Castor Height	Individual Users
SEC020	Secure It MD4 Locker	1075	815	500	440	100	4
SEC021	Secure It MQ8 Locker	1075	1605	500	440	100	8

All dimensions and specifications are in millimetres (mm)





# Accessories

Elevate Your Storage Experience  
Customise Your Locker to Perfection.

Unlock the full potential of your Secure It Lockers with our comprehensive range of accessories designed to enhance functionality and convenience. From personalised numbering systems for easy identification to innovative ventilation solutions.



**NUMBERING**  
Code NUM001



**VENTILATION DESIGN**  
Code VEN001



**MAIL SLOT**  
Code MAI001



**GPO POWER**  
Code ECH001



**USB POWER**  
Code ECH002



**DUO POWER**  
Code ECH003

Ventilation designs and mail slot only available in Laminated Plywood or Natural Timber finishes

# Locks

Secure, Simplified, Strong  
Choose the Lock That Fits Your Needs.

Security meets convenience with Secure It's versatile lock options, tailored to suit various preferences and security levels. Additionally, we offer two types of high-quality padlocks as accessories — robust for enhanced security and compact for ease of use.



**PADLOCK RECEIVER**  
Code LOC001



**COMBINATION LOCK**  
Code LOC002



**KEY LOCK**  
Code LOC003

## SECURE YOUR SPACE

Secure your Secure It Lockers with our range of combination locks, designed to keep items secure and safe. Choose between a traditional single dial combination lock or a four barrel combination lock.

Ensure your students and staff stay connected with lockers that do more than just secure belongings.



**SET CODE LOCK**  
Code PAD001



**REPROGRAMMABLE CODE LOCK**  
Code PAD002

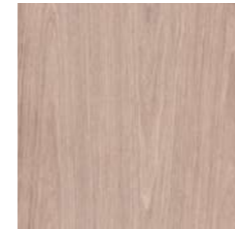
# Materials and Finishes

## Craft Your Vision

Tailor Your Locker with Premium Choices.

Dive into the world of bespoke storage solutions with Secure It's exquisite selection of Materials and Finishes, designed to reflect your style while prioritising sustainability and durability. Each material and finish has been carefully chosen to enhance the aesthetic appeal and functional longevity of your lockers, ensuring they seamlessly integrate into any school setting.

## EO Laminate



**LIGHT OAK**  
Code: S-LTO



**NATURAL OAK**  
Code: S-NTO



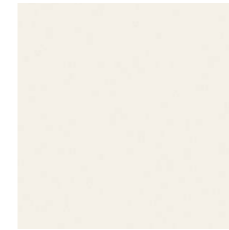
**DARK OAK**  
Code: S-DKO



**STORM**  
Code: S-STM



**GREY**  
Code: S-GRY



**WHITE**  
Code: S-WHT



**BONDI**  
Code: S-BND



**DAINTREE**  
Code: S-DNT

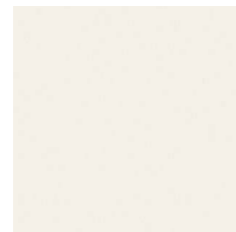


**PINDAN**  
Code: S-PND

## EO Laminate



**STORM**  
Code: S-STM



**WHITE**  
Code: S-WHT



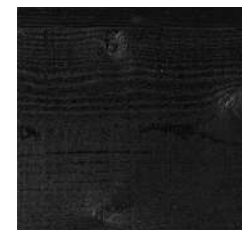
**BLACK RIPPLE**  
Code: PC-R-BLK



**WHITE RIPPLE**  
Code: PC-R-WHT

## Powder Coating

## Moisture Resistant Plinth



**BLACK**  
Code: PL-BLK

### REFLECT YOUR STYLE

Choose finishes and materials that not only match your aesthetic but also meet practical needs. Laminated surfaces offer durability and ease of cleaning, while natural timber adds warmth. Colorful lockers can brighten spaces and contribute to a positive atmosphere.

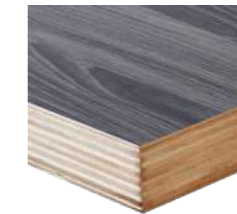
## Laminated Plywood



**LIGHT OAK**  
Code: L-LTO



**NATURAL OAK**  
Code: L-NTO



**DARK OAK**  
Code: L-DKO



**WHITE**  
Code: L-WHT

## Natural Timbers



**BIRCH PLYWOOD**  
Code: B-PLY



**RUBBERWOOD**  
Code: T-RBW



info@vef.com.au  
1300 966 640  
www.vef.com.au  
69-75 Glenvale Crescent  
Mulgrave, Victoria 3170